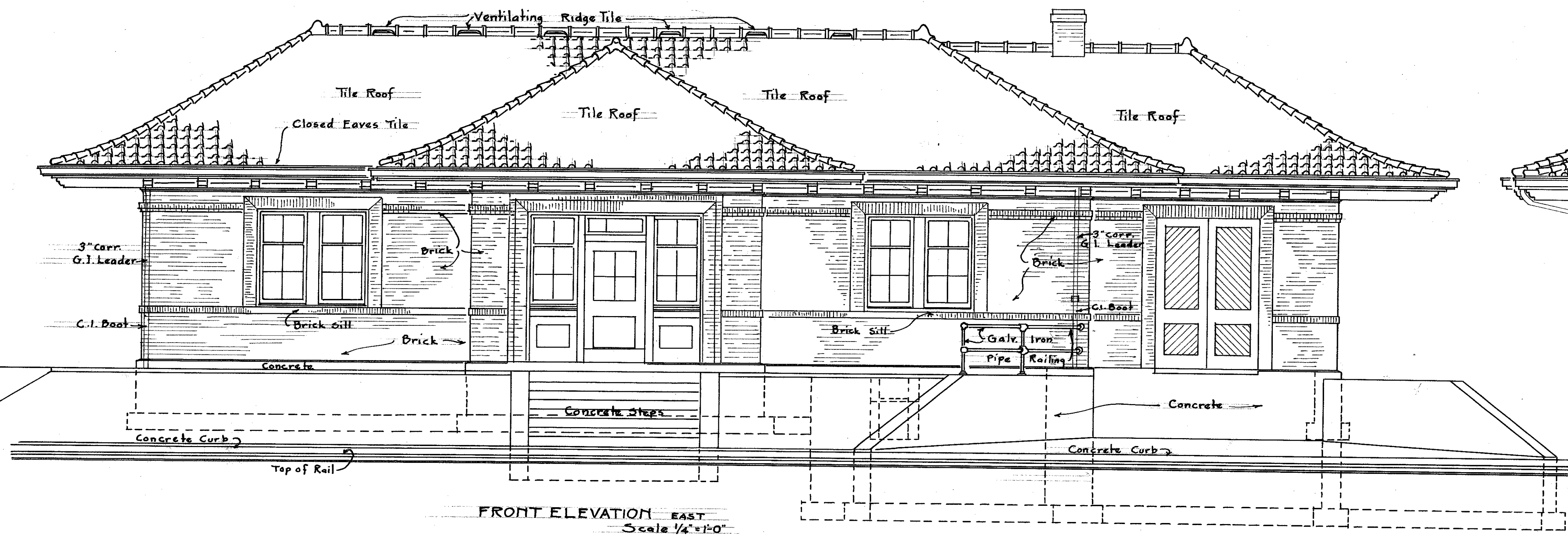
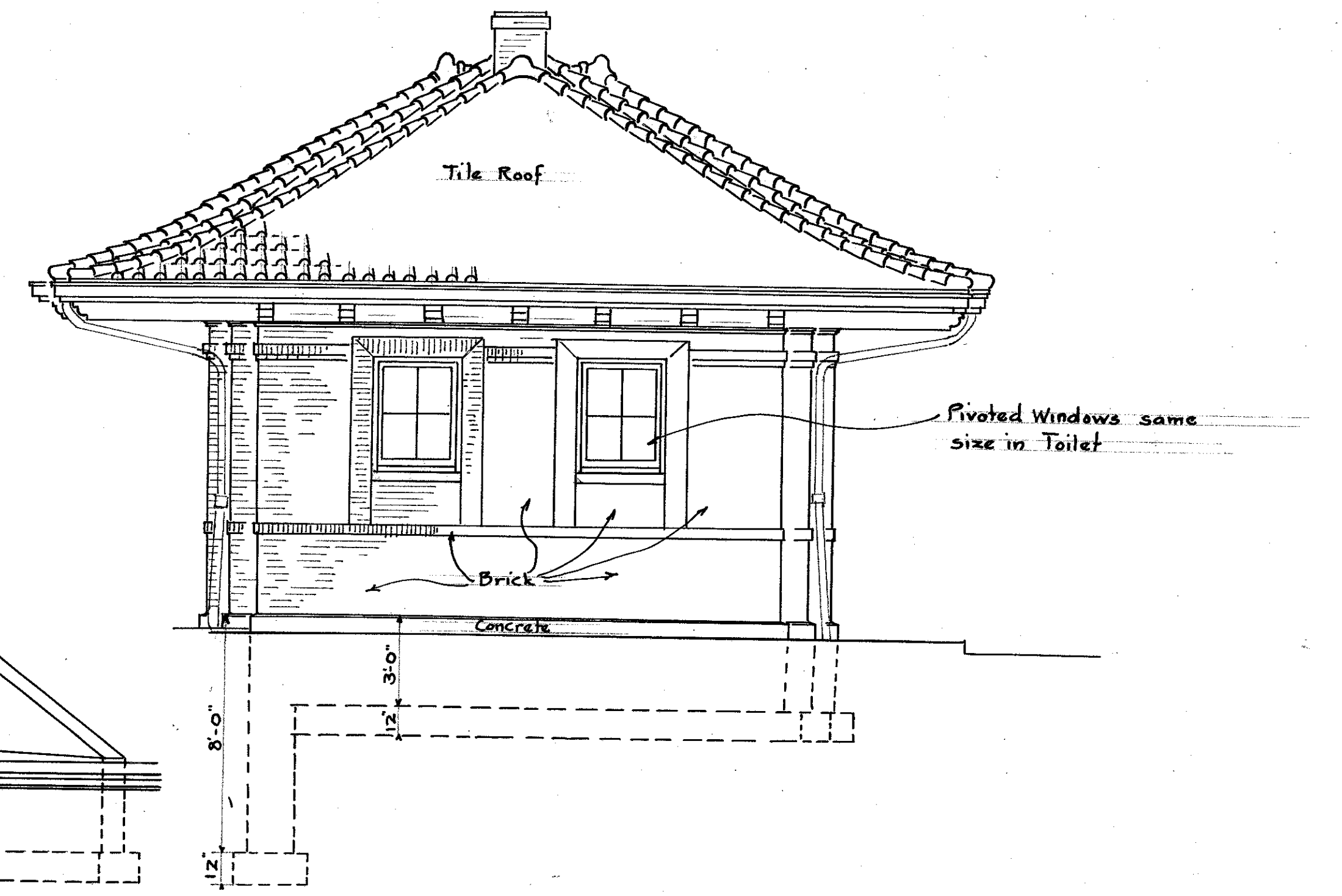


Revised June 17, 1914, affecting double windows and waiting room entrances and adding mud sill under Agent's Office Partition.
 Revised June 19, 1914, adding Detail Section at Agent's Office.
 New location of drains shown 9/15/14
 Revised Dec. 21, 1915 showing drains as installed. J.C.F.

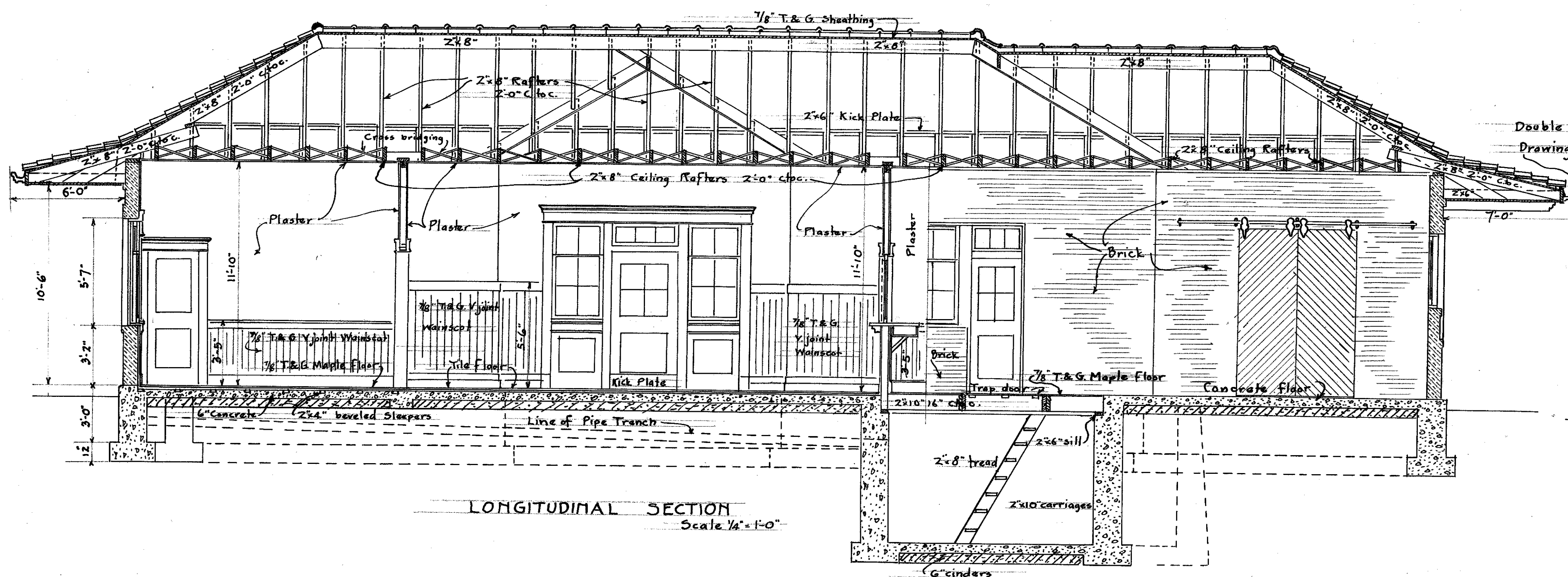
THE BALTIMORE AND OHIO SYSTEM
 THE BALTIMORE AND OHIO RAILROAD CO.
 CUMBERLAND DIVISION-BERKELEY SPRINGS, W.VA.
PROPOSED PASSENGER STATION
 PLANS
 Scale 1/4" = 1'-0" June 15, 1914
 Office of Architect
 Baltimore Md.
 Chief Engr. *A.H. Long*
 J.C.F. Drawing No. 10318A
 Signature traced from original.
 File 202 5825



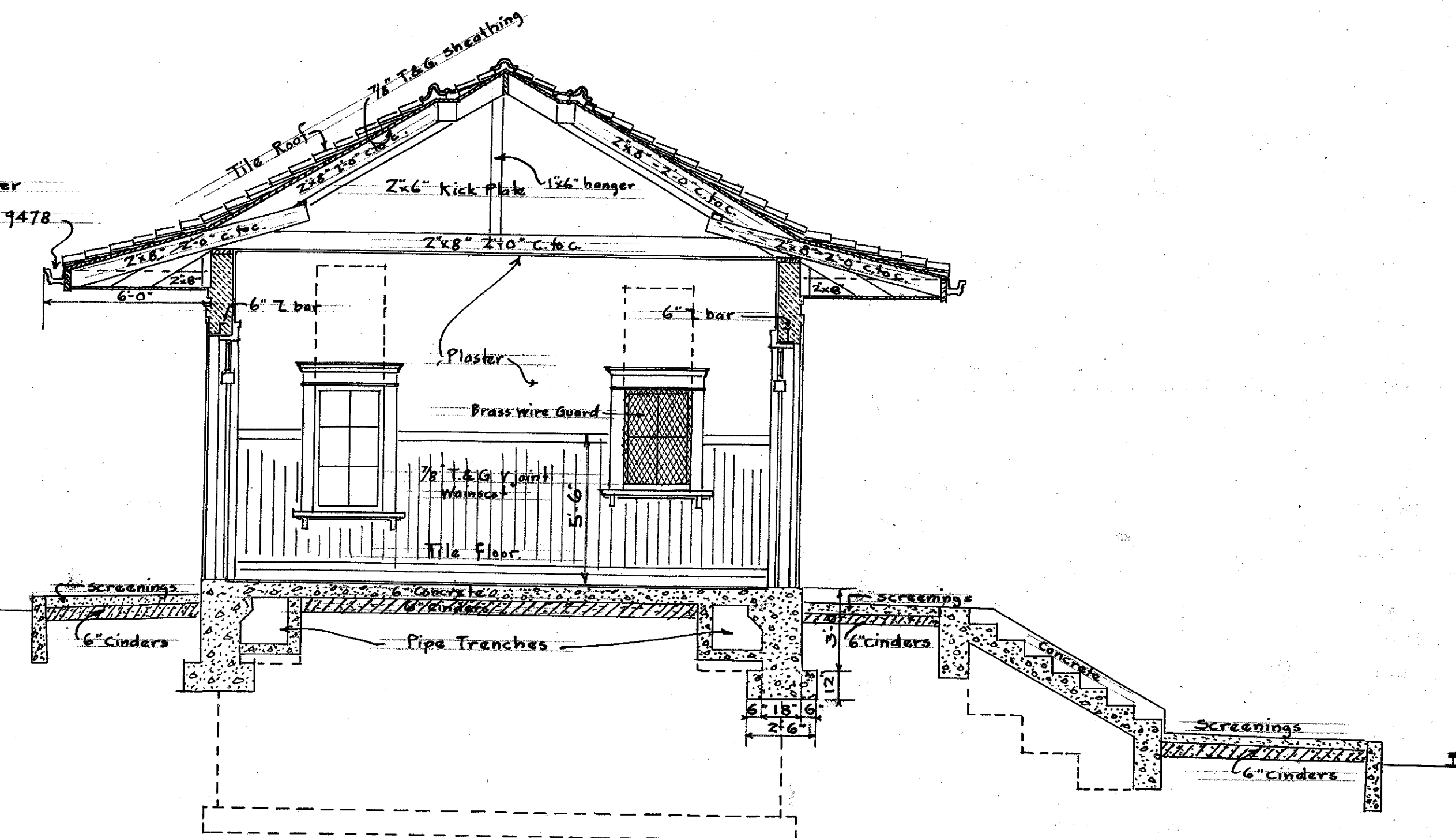
FRONT ELEVATION EAST
Scale 1/4"=1'-0"



END ELEVATION NORTH
Scale 1/4"=1'-0"



LONGITUDINAL SECTION
Scale 1/4"=1'-0"



CROSS SECTION
Scale 1/4"=1'-0"

Revised: June 19, 1914
for completion

THE BALTIMORE AND OHIO SYSTEM
THE BALTIMORE AND OHIO RAILROAD COMPANY
CUMBERLAND DIV. BERKELEY SPRINGS, WVA.
PROPOSED PASSENGER STATION
ELEVATIONS AND SECTIONS

Scale 1/4"=1'-0" June 18, 1914

Office of Architect
Balto. Md.

Chief Engr.

Althaus
Architect

File 90-1 Drawing No. 10319